

DataCollar[®] - Memory Logging

Casing Collar Locator (CCL)



Overview:

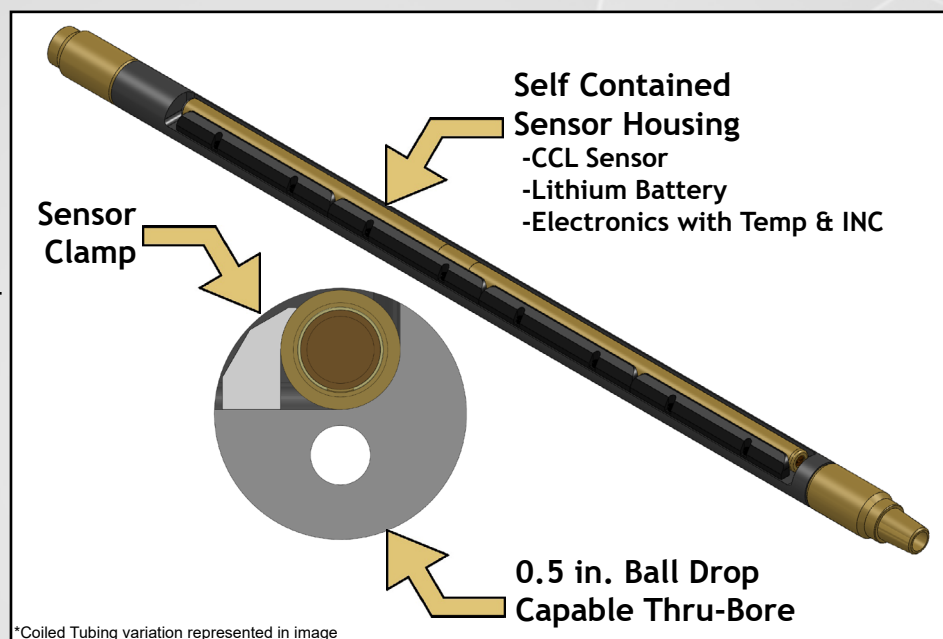
DataCollar is a rugged platform that provides excellent location accuracy of connections, perforations, windows, or other wellbore components or anomalies. The CCL sensor, electronics, and batteries are all contained within the sensor housing for easy field maintenance, scalable design, and seamless integration with other UAI technologies.

Features:

- Downhole Measurements
 - Casing Collar Locator (CCL)
 - Temperature
 - Inclination
- 0.5 in. Ball Drop Capable
- Minimal Overall Length
- Integrates Seamlessly with BHA
- Sensor swappable with DataKUT
- NACE Compliant

Applications:

- Coiled Tubing or Slickline
- Depth Control and Correlation
- Single Trip Plug & Perf
- Reservoir Logging when paired with DataKUT (Gamma Ray)



2-3/8 in. Coiled Tubing
1-1/2 in. Slickline
1-3/4 in. Slickline

DataCollar Physical			2-3/8 in. Coiled Tubing	1-1/2 in. Slickline	1-3/4 in. Slickline
Nominal OD (in./mm)			2.375 / 60.3	1.500 / 38.1	1.750 / 44.5
Maximum OD (in./mm)			2.400 / 61.0	1.500 / 38.1	1.750 / 44.5
ID (in./mm)			0.563 / 14.3	Not Applicable	
Material			Nitronic 50	316 Stainless Steel	304 SS & 4140
Overall Length (in./mm)	48.50 / 1,231.9	56.75 / 1,441.5		50.7 / 1,287.8	54.3 / 1,378.5
Make-Up Length (in./mm)	46.00 / 1,168.4	54.75 / 1,390.7		49.7 / 1,262.4	53.2 / 1,352.0
Uphole Connection	1.7-10 Stub Acme Box	1-1/2 in. AMMT Box		5/8 in. Sucker Rod Pin	3/4 in. Sucker Rod Pin
Downhole Connection	1.7-10 Stub Acme Pin	1-1/2 in. AMMT Pin		5/8 in. Sucker Rod Box	3/4 in. Sucker Rod Box

Unmanned Ad-Hoc Industries, Inc.
 519 East Oak Hill Drive
 Spring, TX 77386



Office: (888) 396-5924
 Info@GlobalUAI.com
 www.GlobalUAI.com

DataCollar[®] - Casing Collar Locator (CCL)

2-3/8 in.
Coiled Tubing

1-1/2 in.
Slickline

1-3/4 in.
Slickline

DataCollar Mechanical			
Pressure (psi/bar)		15,000 / 1,034	
Temperature (°C/°F)		150 / 302	
Compression (lb _r /kN)	50,000 / 222.4	4,000 / 17.8	27,000 / 120.1
Tension (lb _r /kN)	110,000 / 489.3	6,500 / 28.9	28,000 / 124.6
Torque (ft-lb/Nm)	3,000 / 4067	--	--

CCL

Sensor Measurement	
Technology	Magnetic Flux
Running Speed	30 - 300 ft/min / 9.1 - 91.4 m/min
Accuracy	0.5 ft / 0.15 m
Max Sample Rate	20 Hz

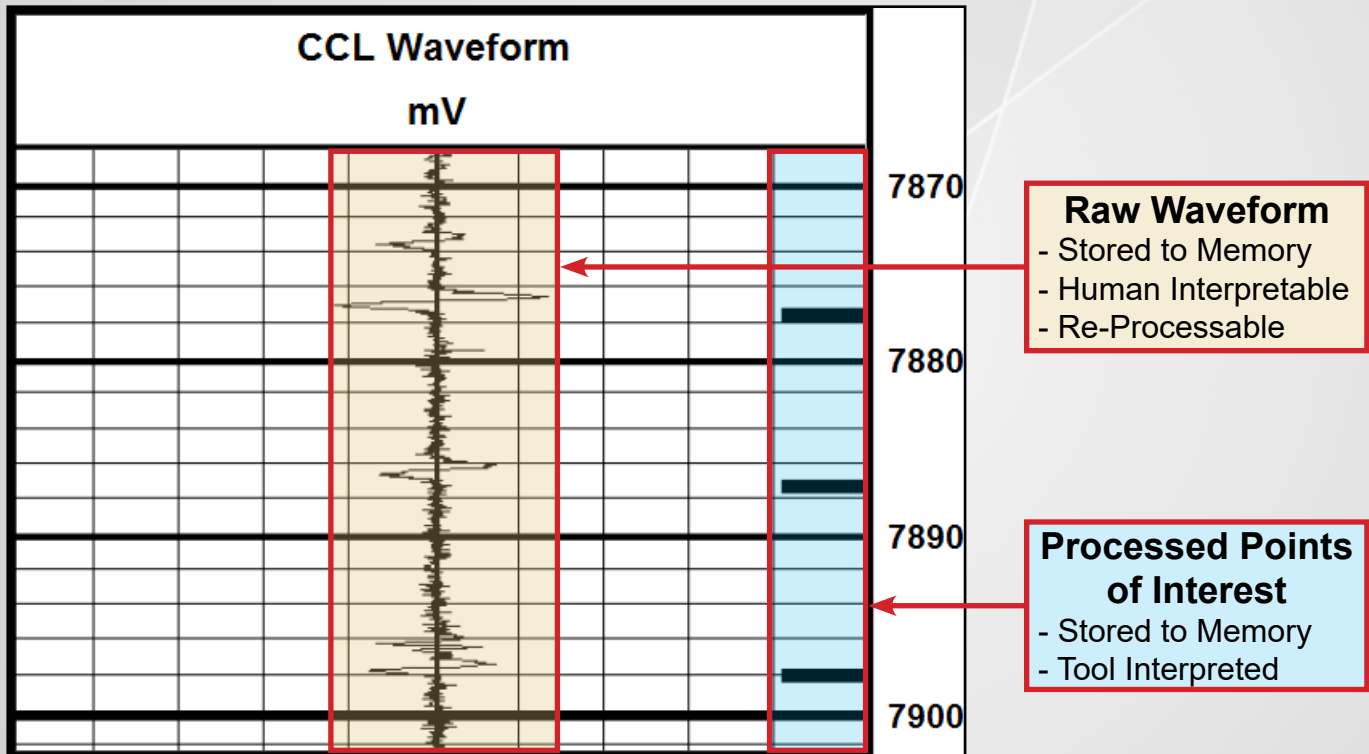


Figure 1 - Raw CCL memory waveform and the processed locations of objects of interest

Inclination

Temperature

Sensor Measurement		
Technology	MEMS Accelerometer	Silicon
Calibration Range	0 - 180 Degrees	0 - 150 °C / 0 - 302 °F
Accuracy	0.5 Degrees	0.01 % Full Scale
Max Sample Rate	0.2 Hz	0.2 Hz