

DataTorq[®] - Memory Logging

WOB & TORQUE



Overview:

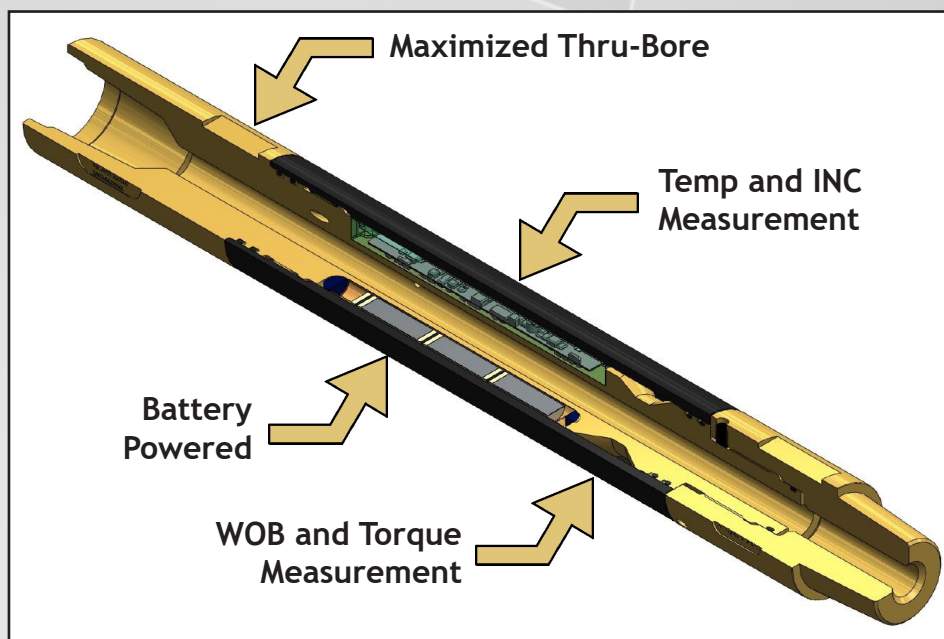
Quantitative downhole measurement of coiled tubing or stick pipe Weight-on-Bit (WOB) and Torque are fundamental data points to understanding drilling/milling mechanics. Analysis of data provided by the DataTorq enables the operator the ability to optimize operations and evaluate BHA effectiveness.

Features:

- Downhole Measurements
 - WOB
 - Torque
 - Temperature
 - Inclination
- Minimal Overall Length
- Integrates Seamlessly with BHA
- NACE Compliant

Applications:

- Coiled Tubing or Stick Pipe*
- Drilling / Milling Optimization
- BHA Component Evaluation
- Coiled Tubing Model Validation
- Multi-Lateral / Multi-Well
- Placement Above or Below Agitator



2-7/8 in.

(*available soon)
3-1/8 in.

DataTorq Physical	2-7/8 in.	3-1/8 in.
OD (in./mm)	2.875 / 73.0	3.125 / 73.0
ID (in./mm)	0.813 / 20.7	1.000 / 27.0
Material	Nitronic 50 or 4140 (w/ QPQ Surface Finish)	
Overall Length (in./mm)	28.0 / 711.2	34.24 / 323.9
Make-Up Length (in./mm)	25.5 / 647.7	30.47 / 266.7
Uphole Connection	2-3/8 in. PAC Box	2-3/8 in. API Reg Box
Downhole Connection	2-3/8 in. PAC Pin	2-3/8 in. API Reg Pin
DataTorq Mechanical		
Pressure (psi/bar)	17,500 / 1,207	15,000 / 1,034
Temperature (°C/°F)	150 / 302 (Standard) 172 / 342 (Optional)	
Impact (lb _f /kN)	130,000 / 578.3	115,000 / 511.5
Compression (lb _f /kN)	130,000 / 578.3	115,000 / 511.5
Tension (lb _f /kN)	130,000 / 578.3	250,000 / 1,112.1
Torque (ft-lb/Nm)	3,000 / 4,067	7,500 / 10,168
Sensor Mechanical		
WOB (lb _f /kN)	30,000 / 133.4	55,000 / 244.7
Torque (ft-lb/Nm)	2,200 / 2,982	5,300 / 7,185

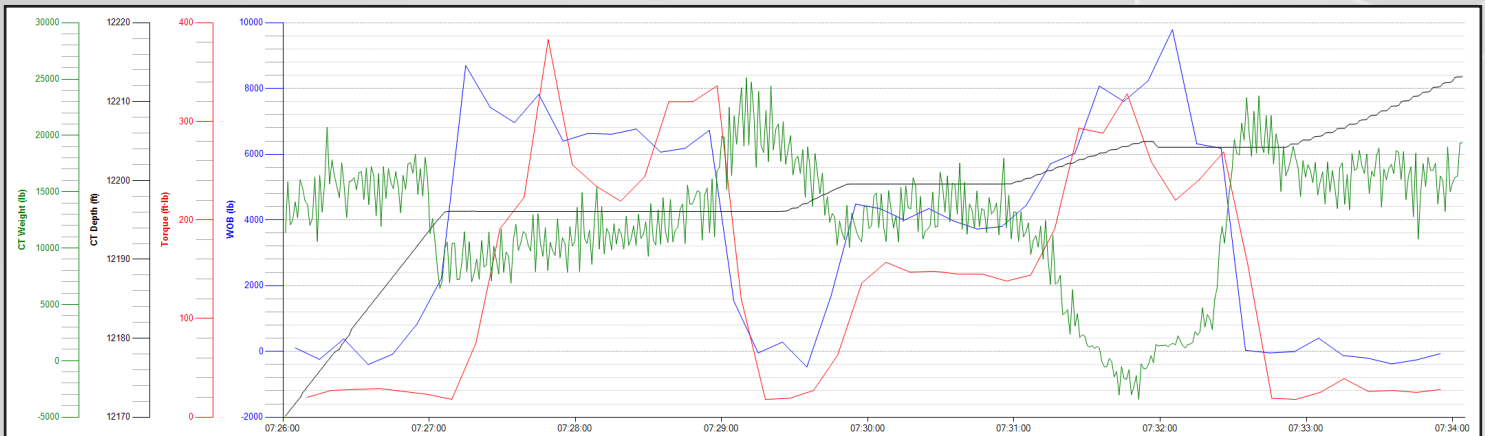
Unmanned Ad-Hoc Industries, Inc.
519 East Oak Hill Drive
Spring, TX 77386



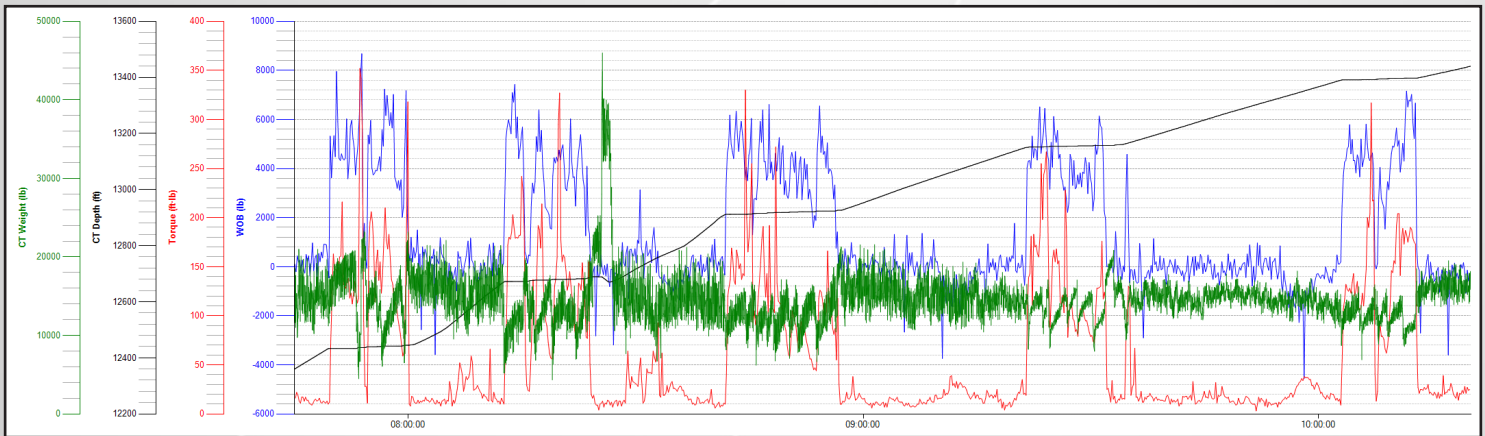
Office: (888) 396-5924
Info@GlobalUAI.com
www.GlobalUAI.com

DataTorq[®] - WOB & TORQUE

	WOB	Torque	Inclination	Temperature
Sensor Measurement				
Technology	Kfoil	Kfoil	MEMS Accelerometer	Silicon
Calibration Range - 2-7/8"	±30,000 lbf / 133.4 kN	0-2,000 ft-lb / 0-2,711 Nm	0-180 Degrees	0-150 °C / 0-302 °F
Calibration Range - 3-1/8"	±50,000 lbf / 222.4 kN	0-5,000 ft-lb / 0-6,779 Nm	0-180 Degrees	0-150 °C / 0-302 °F
Accuracy	<0.5 % Full Scale	<0.5 % Full Scale	0.5 Degrees	0.01 % Full Scale
Max Sample Rate	0.2 Hz	0.2 Hz	0.2 Hz	0.2 Hz



Individual Plug Analysis with UAI Downhole WOB and Torque plotted with Coiled Tubing Weight and Depth



Multi-Plug Plots show a larger view of the operation to see the impact of milling parameters between plugs.

Unmanned Ad-Hoc Industries, Inc.
519 East Oak Hill Drive
Spring, TX 77386



Office: (888) 396-5924
Info@GlobalUAI.com
www.GlobalUAI.com